

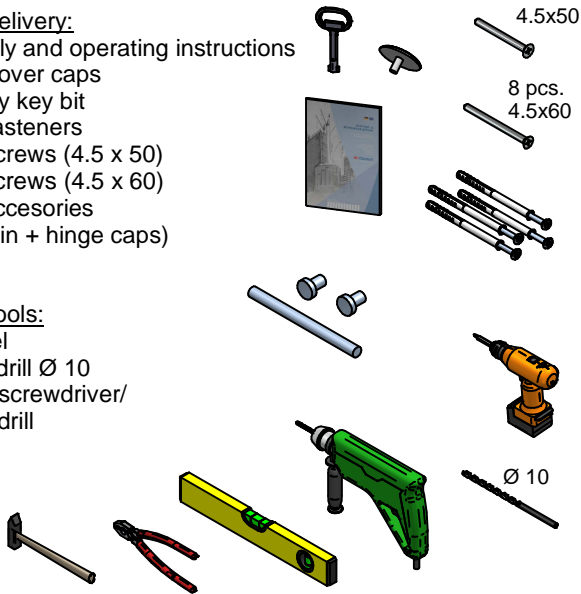
### 1 Check accessories for completeness:

Scope of delivery:

- A. Assembly and operating instructions
- B. Screw cover caps
- C. Two-way key bit
- D. 4 pcs. fasteners
- E. Fixing screws (4.5 x 50)
- Fixing screws (4.5 x 60)
- F. Hinge accessories (Hinge pin + hinge caps)

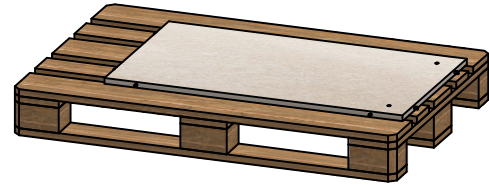
Required tools:

- Spirit level
- Masonry drill  $\varnothing$  10
- Cordless screwdriver/ Cordless drill
- Hammer
- Pliers



### 2 Place the rear panel

Place the rear panel on a clean, flat surface.



### 3 Place the base module

Connect the base module and the rear panel using the metal pins provided in the rear panel to fit them in the openings of the base module (Fig. 1).

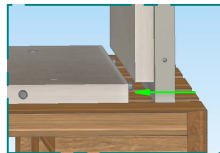
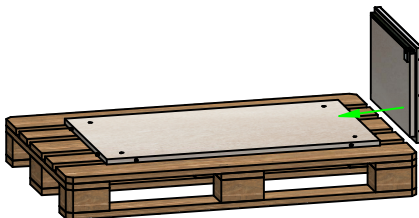


Fig. 1



**Caution!**  
Do not pry!  
Risk of bursting!

### 4 Screw the rear panel to the base module

Screw the base module (4.5x50) to the back panel from below (Fig. 2).

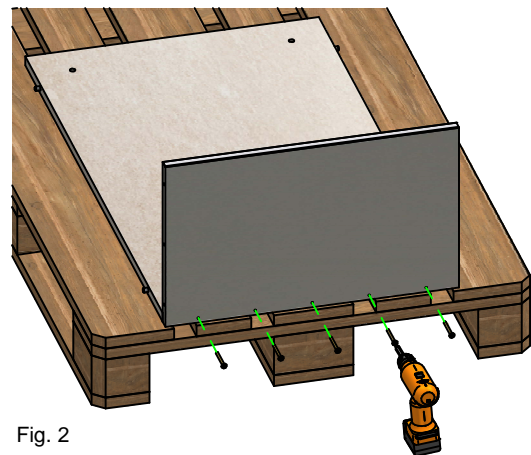
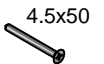


Fig. 2

### 5 Place side modules

Carefully turn the rear panel with the screwed-on base module onto its side. Place the side module from above into the existing openings using the metal pins on the rear panel (Fig. 3).

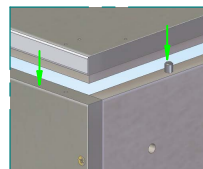
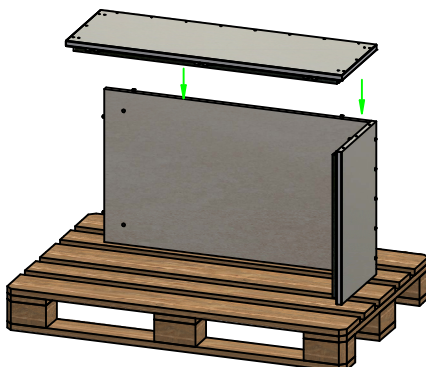


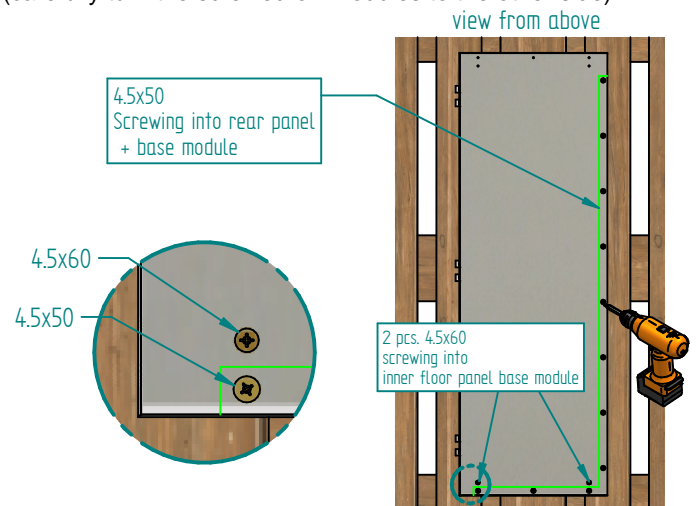
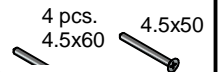
Fig. 3



**Caution!**  
Do not pry!  
Risk of bursting!

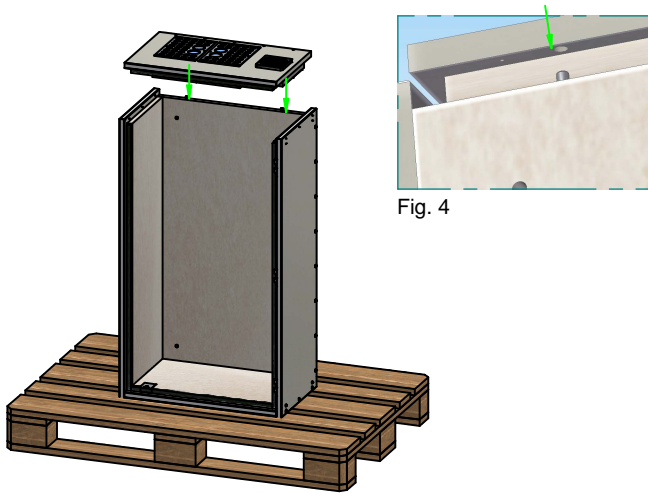
### 6 Screw together side modules

Screw the side module (with supplied screws) into the rear panel + base module. Repeat points 5 + 6 with opposite side module. (carefully turn the screwed-on modules to the other side)



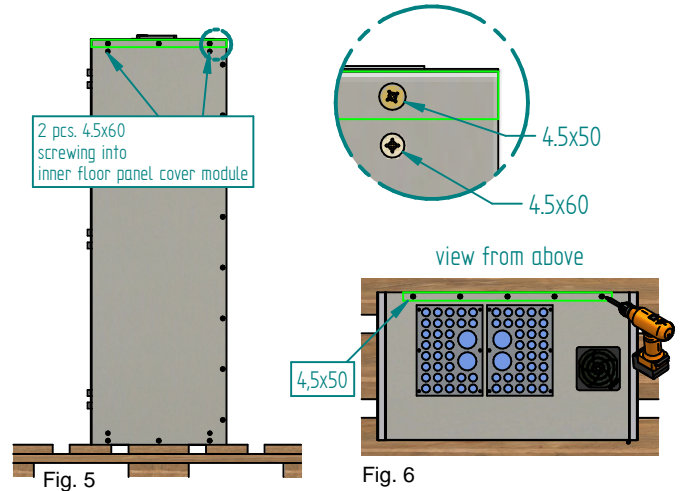
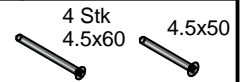
### 7 Place cover module

Position the housing upright and stable.  
Place the cover module in the existing openings in the rear panel using metal pin (fig. 4).



### 8 Fastening cover module

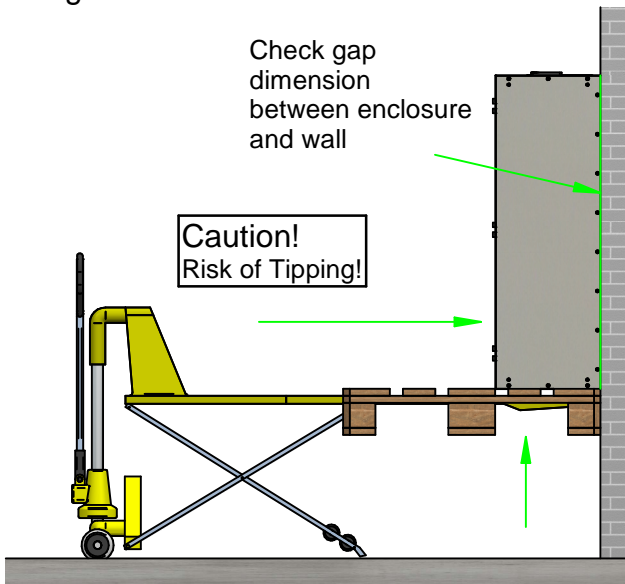
Screw the cover module to the side modules (Fig. 5).  
Screw the cover module to the rear panel from above using 4.5x50 (Fig. 6)



### 9 Position the enclosure enclosure on straight wall.

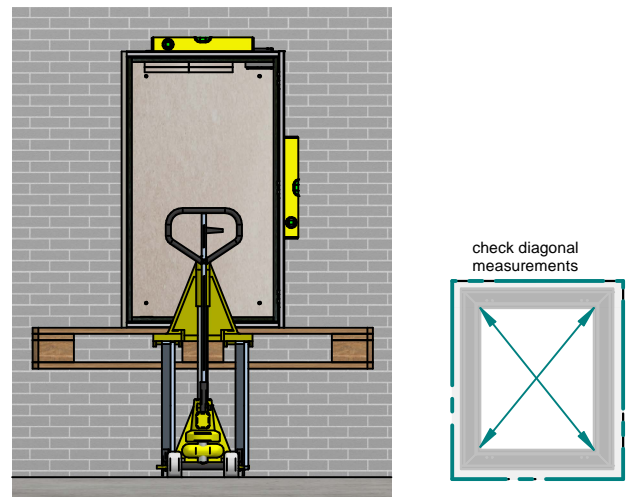
Check gap dimension between enclosure and wall

**Caution!**  
Risk of Tipping!

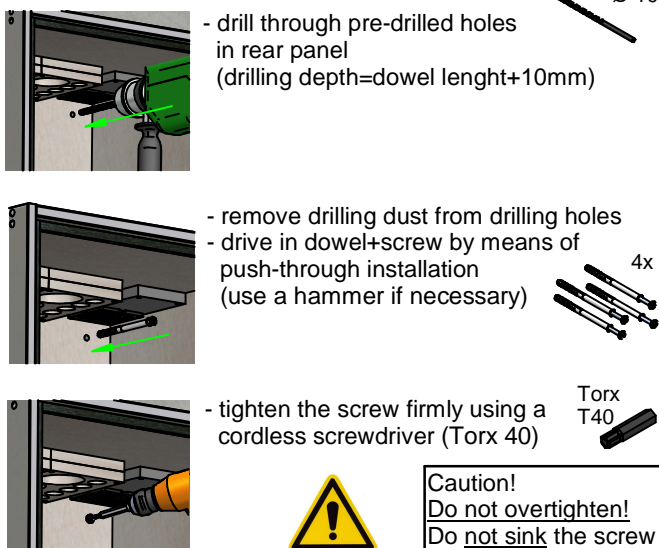


### 10 Preparing for wall mounting

Before drilling, check that enclosure is vertically aligned → Check diagonal dimension



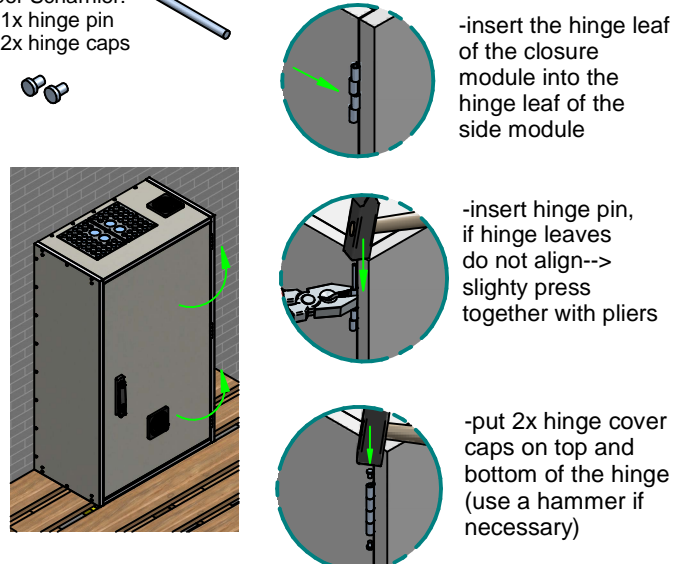
### 11 wall mounting (4x)



**Caution!**  
Do not overtighten!  
Do not sink the screw head into the material!

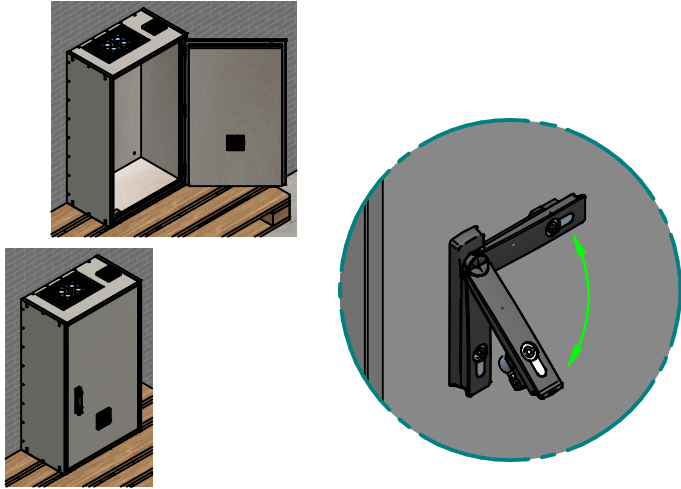
### 12 Insert closure

per Scharnier:  
-1x hinge pin  
-2x hinge caps



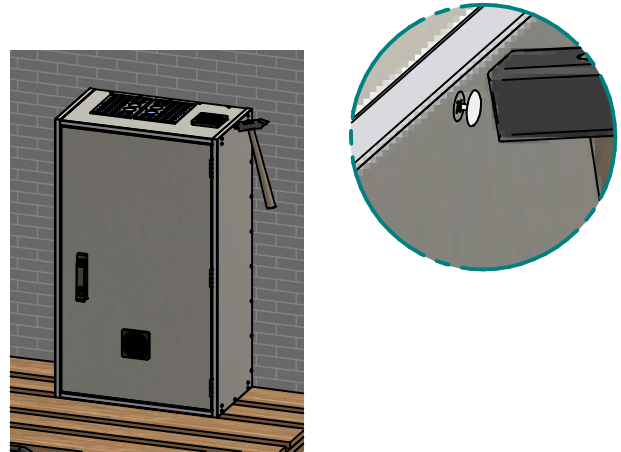
### 13 Check closure for ease of movement

It must be possible to open and close the enclosure easily.  
(if necessary, open and close the swivel lever several times)



### 14 Attach the cover caps

Fit the cover caps onto the screws.  
(use a hammer if necessary)



### 15 Final check



*for further information on the operation and installation of our products, please refer to our assembly and operating instructions and the QR code to scan*



Assembly and  
Operating  
Instructions

Please print and keep it  
in the enclosure!